

GLASS(ALIGN/ID) MARKER

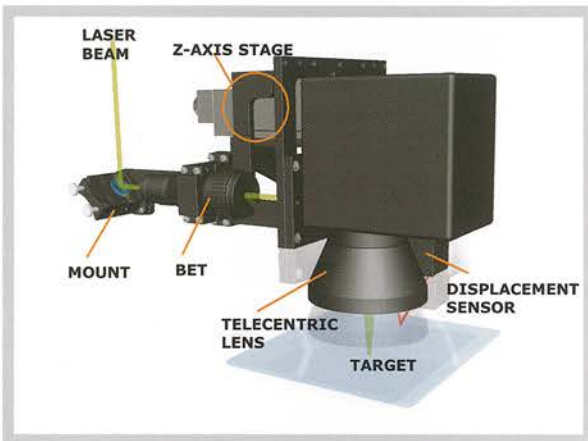
High Quality & High Accuracy

OVERVIEW

A system which performs Glass ID Marking on a specific position of PDP Glass using LASER.

In order to make the basis for the Exposure to mark patterns, this system performs On/In-glass marking of Align Maker(+, ●), or ID.

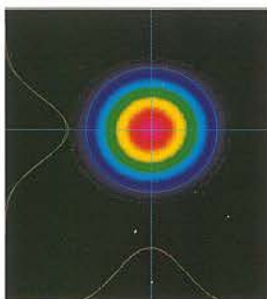
Achieves uniform marking through auto focusing technology regardless of the flatness of stage surface



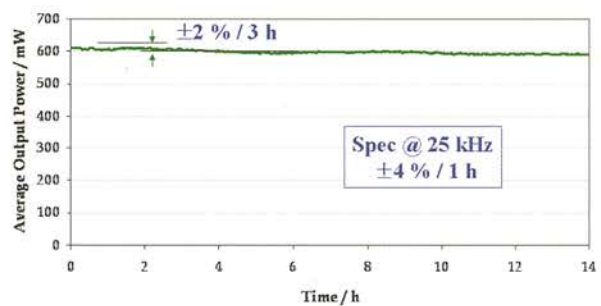
► Using Z-axis Stage, height can be modified, Measuring the height of a target using displacement sensor

KEY FEATURES

- High speed marking
- Large marking area
- Diode pumped LASER : UV 355nm
- User friendly software
- Maintenance free over 10,000 hours
- Field-replaceable diode module
- Robust scan head
- Powerful editing software
- Improved marking quality
- High efficiency, High stability
- Advanced technology application
- Auto Focusing

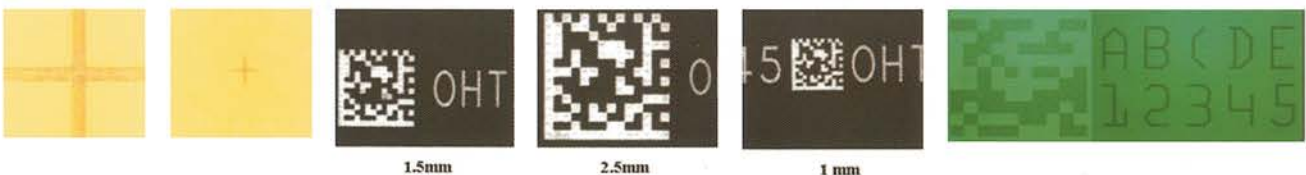


► Perfect Beam mode



► Superior Power Stability

SAMPLE



1.5mm

2.5mm

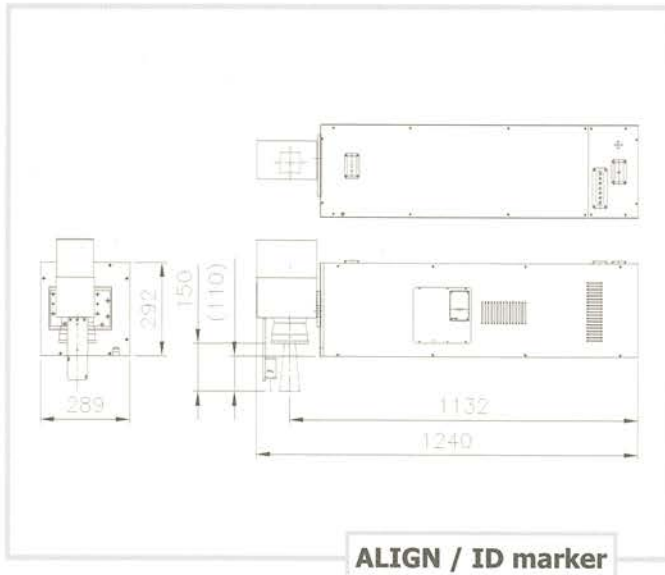
1 mm

GLASS(ALIGN/ID) MARKER

SYSTEM SPECIFICATIONS

SPECIFICATION		
MODEL	ALIGN MARKER	ID MARKER
Wavelength	355nm	355nm
Beam Mode	TEM ₀₀	TEM ₀₀
LASER Power (Maximum Power)	1.8W	1.8W
SCAN HEAD		
Titling Scope	25mm * 25mm	60mm * 60mm
Working Distance	70mm	151.2mm
Marking Method	Galvanometer Scan	Galvanometer Scan
Spot size	5um	9um
UTILITY		
Cooling Method	Air Cooling	Air Cooling
Supply Voltage	AC220V, 50/60Hz, Single phase	AC220V, 50/60Hz, Single phase
ENVIRONMENT		
Operating Temperature	10~35°C	10~35°C
Operating Humidity	5~90% (non-condensing)	5~90% (non-condensing)
CONTROLLER		
CPU	Intel / Core 2 Dou	
RAM	1GB	
HDD	80GB	
OS	Windows XP	

DRAWING



SOFTWARE FUNCTIONS

- I/O Check
- Simplifying the Marking data
- Easy Marking ID Edit Function
- Support various files (PLT, FONT, etc.)
- Barcode (VERICODE, DATA MATRIX, etc.) marking
- LASER info. monitoring and control
- Monitoring the steps of working process
- Marking Data Preview

hardram
LASER SOLUTION FOR FPD & SEMICONDUCTOR

COMPANY BRANCH OFFICE

Company Branch Office Homepage : www.hardram.co.kr
 #301, Lotte Suntech-city B/D, 513-15,
 Sangdaewon-Dong, Jungwon-Gu, Sungnam-Si, Gyeongki-Do, Korea
 TEL : +82-31-777-2440 FAX : +82-31-777-2445